



LR LOADER RAKES

MAXIMUM CLEARING EFFICIENCY

LR



LR WITH CLAMPS



LOADERS REALLY PAY OFF ON CLEARING JOBS

EFFICIENT

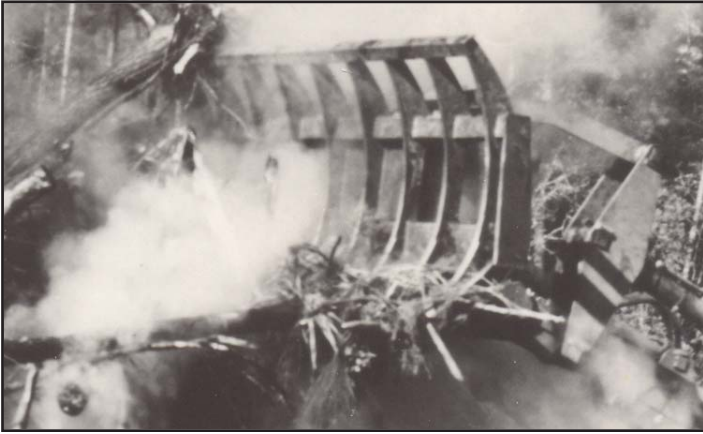
Equip your loader with a Rockland LR Loader Rake to take full advantage of the loader's speed, reach and lift. Loaders turn into efficient land clearing machines when equipped with a Rockland LR Loader Rake. When the rake is raised and tilted forward, great leverage can be exerted high on the tree trunk to tip the tree and expose the roots. Stumps can now be dug and loaded with the same machine. Windrows can be built bigger and higher for more complete burning. Cleanup time is drastically reduced.

The LR Loader Rake's long, tough teeth are built of certified high strength, heat-treated alloy steel for years of heavy-duty land clearing service. They are curved for maximum rolling and sifting action, and they project forward of the frame far enough so that loading land clearing debris is fast and efficient. The dig and raking angle are controlled by the loader's bucket rollback cylinders so that operating angle and depth are infinitely adjustable for maximum productivity. At the center of the brush guard is a tree push bar with teeth to keep trees centered when pushing them over. Hydraulically operated clamps are optional on all LR Loader Rakes. They provide positive load control and increase load capacity. Increase land clearing efficiency by demanding a Rockland LR Loader Rake on your next clearing job.

RUGGED

From the high strength, heat-treated alloy steel teeth through the mainframe and attaching brackets, the LR rake reflects design excellence and manufacturing quality. The teeth are designed specifically for land clearing. They dig deep and are tough enough to absorb all the abuse created by clearing land. Rockland LR rakes deliver years of dependable trouble-free performance.

SPECIFICATIONS



Higher Windrows = Better Burns

Hotter fires are created by higher windrows. Bigger windrows burn better and cleaner. The reach and speed of a loader equipped with a Rockland LR Loader Rake really pays off stacking and piling. Whether it be clearing and burning, or clearing and loading, you need a Rockland LR Loader Rake to turn your loader into an efficient land clearing machine.

WHEEL LOADERS

[Click here to identify your machine category.](#)

Machine Category	5	10	20	30	40	50	60	70
Raking Width	79" 2007	90" 2286	96" 2438	106" 2692	110" 2794	118" 2997	129" 3277	139" 3531
Number of Teeth	7	8	8	8	8	8	9	9
Tooth Clear Spacing	12" 305	11" 279	12" 305	13.5" 343	14" 356	14.5" 368	13" 330	14" 356
Tooth Penetration	12" 305	16" 406	16" 406	16" 406	16" 406	20" 508	20" 508	20" 508
Height	52" 1321	56" 1422	57" 1448	57" 1448	57" 1448	66" 1676	66" 1676	71" 1803
Weight lbs.	1000 454	1450 658	2150 976	2475 1123	2675 1213	3800 1724	4975 2259	6650 3019
Weight with Clamps lbs.	1600 726	2065 938	2830 1285	3570 1619	4000 1814	5925 2688	7090 3219	7550 3428

(mm/kg)

Specifications subject to change without notice.

CRAWLER LOADERS

[Click here to identify your machine category.](#)

Machine Category	5	10	20	30	40	50	60	70
Raking Width	67" 1702	82" 2083	88" 2235	94" 2388	94" 2388	108" 2743	115" 2921	116" 2946
Number of Teeth	6	7	7	8	8	8	8	8
Tooth Clear Spacing	12.25" 311	12.25" 311	13" 330	11.75" 298	11.75" 298	13" 330	13.5" 343	13" 330
Tooth Penetration	12" 305	16" 406	16" 406	16" 406	20" 508	20" 508	20" 508	20" 508
Height	52" 1321	56" 1422	57" 1448	57" 1448	66" 1676	66" 1676	66" 1676	71" 1803
Weight lbs.	880 400	1320 599	1920 872	2210 1003	3385 1537	3915 1777	4515 2050	5930 2692
Weight with Clamps lbs.	1480 672	2235 1015	2600 1180	3485 1582	4700 2134	5465 2481	6630 3010	6830 3101

(mm/kg)

Specifications subject to change without notice.

INSTALLATION INFORMATION

All Rockland LR rakes mount in place of the standard bucket using factory pins or specified coupler brackets. Rakes with clamps require a three-spool valve and boom arm piping to complete the installation.

WARRANTY

Rockland Loader Rakes are guaranteed against failure due to defective design, workmanship, or materials for a period of one year or 2,000 hours.



Distributed by:

ROCKLAND MANUFACTURING CO.
 P O BOX 5
 BEDFORD, PA 15522
www.rocklandmfg.com